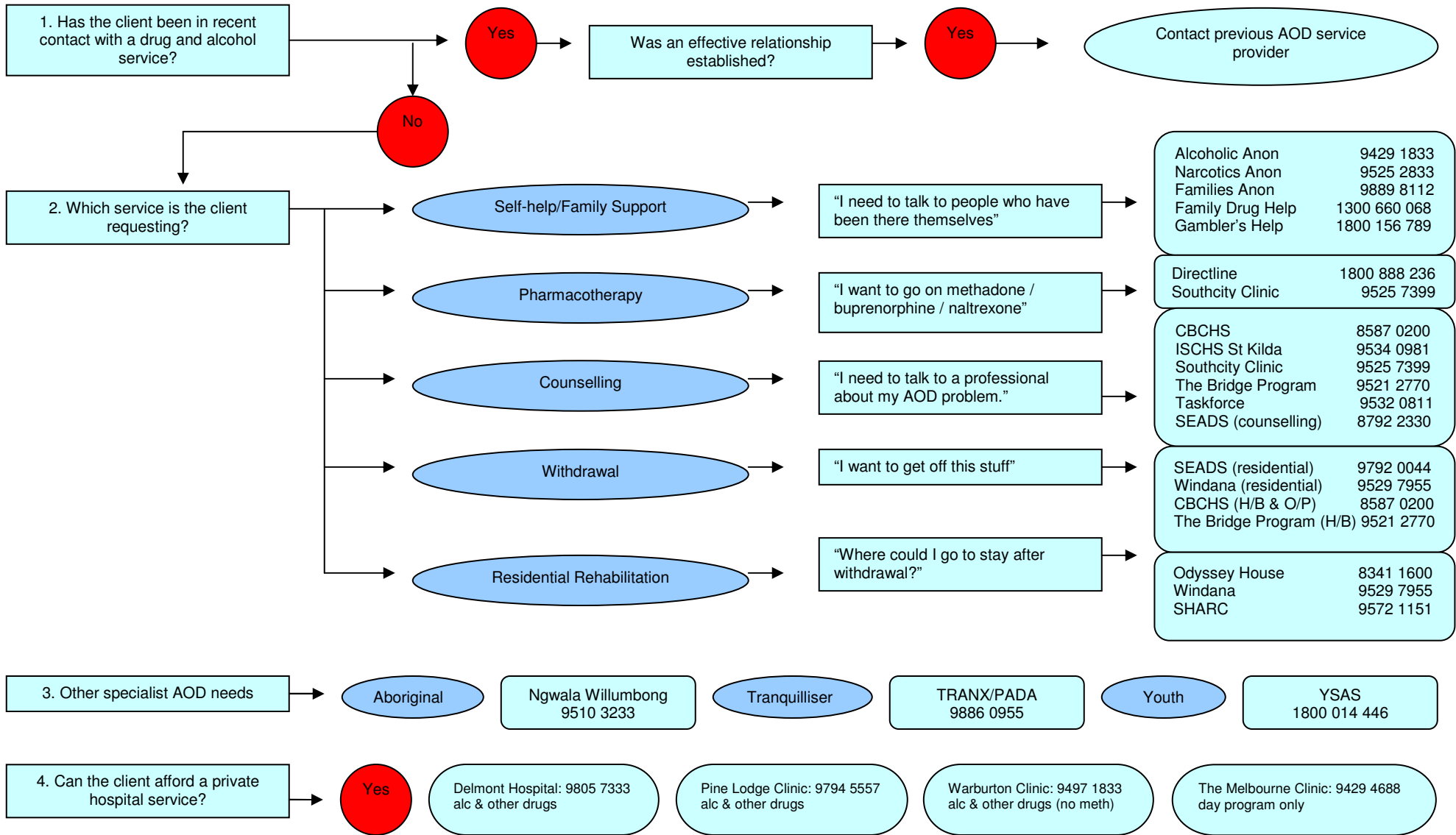


# A REFERRAL GUIDE FOR ALCOHOL AND OTHER DRUG SERVICES FOR THE SOUTHERN METROPOLITAN REGION OF MELBOURNE



**CONSIDER CONSULTATION / REFERRAL TO GPs WITH EXPERTISE IN AOD ISSUES**  
**SOUTHCITY CLINIC 9525 7399                      DIRECTLINE 1800 888 236**

## Alcohol and Other Drug Services for the Cities of Port Phillip, Stonnington, Glen Eira, Bayside & Kingston Within the Southern Metropolitan Region

<p><b>The Bridge Centre</b> <b>Salvation Army Drug Treatment Services</b> Assessment &amp; referral for individuals experiencing difficulties with drugs and/or alcohol. Counselling and home based withdrawal services</p>	<p>9521 2770</p>	<p><b>SEADS – South Eastern Alcohol and Other Drug Services</b> <b>Drug Withdrawal Unit</b> <a href="http://www.southernhealth.org.au/seads/">www.southernhealth.org.au/seads/</a> Residential withdrawal service.</p>	<p>9792 0044</p>
<p><b>CBCHS - Central Bayside Community Health Services</b> <a href="http://home.vicnet.net.au/~cbchs/">home.vicnet.net.au/~cbchs/</a> Counselling, consultancy and continuing care for any person experiencing an alcohol or drug problem.</p>	<p>8587 0200</p>	<p><b>SHARC (Self Help Addiction Resource Centre)</b> <a href="http://www.sharc.org.au">www.sharc.org.au</a> Post-withdrawal supported accommodation for young people up to 25. Mutual support and self-help groups.</p>	<p>9572 1151 9573 3000</p>
<p><b>Women’s Alcohol and Drug Service</b> <b>Royal Women’s Hospital</b> <a href="http://www.rwh.org.au/wads/index.cfm?doc_id=3819">http://www.rwh.org.au/wads/index.cfm?doc_id=3819</a> Statewide secondary consultation for the management of clients who are pregnant and using substance</p>	<p>9344 3631</p>	<p><b>Southcity Clinic</b> <a href="http://www.southcityclinic.com.au">www.southcityclinic.com.au</a> Specialist methadone service for clients with major medical, psychiatric and/or psychosocial problems. Consultancy, support and training for health providers.</p>	<p>9525 7399</p>
<p><b>DirectLine</b> State-wide 24 hour confidential alcohol and drug telephone counselling, information and referral for the community.</p>	<p>1800 888 236</p>	<p><b>Taskforce</b> <a href="http://www.taskforce.org.au">www.taskforce.org.au</a> Assessment and referral, education, counseling for people with drug related problems. Youth outreach, peer support and supported accommodation.</p>	<p>9532 0811</p>
<p><b>Family Drug Help</b> <a href="http://www.familydrughelp.sharc.org.au">www.familydrughelp.sharc.org.au</a> 24hr information and support to families of drug users.</p>	<p>1300 660 068</p>	<p><b>TRANX/PADA</b> <a href="http://www.tranx.org.au">www.tranx.org.au</a> Benzodiazepine and analgesic focused statewide counselling consultancy and continuing care, information and community education.</p>	<p>9886 0955</p>
<p><b>ISCHS - Inner South Community Health Services</b> <a href="http://www.ischs.org.au">www.ischs.org.au</a> Counselling, consultancy &amp; continuing care for any person experiencing an alcohol or drug problem. Outreach and casework/counselling.</p>	<p><b>Prahran: 9525 1300</b> <b>St Kilda: 9534 0981</b> <b>South Port: 9690 9144</b></p>	<p><b>Windana Society Inc.</b> <a href="http://home.vicnet.net.au/~emradss/windana.htm">home.vicnet.net.au/~emradss/windana.htm</a> Residential and non-residential treatment programs with a self-help and self-responsibility focus for adults experiencing problems with drug and alcohol</p>	<p>9529 7955</p>
<p><b>Ngwala Willumbong</b> <a href="http://www.ngwala.org/">www.ngwala.org/</a> Region-wide counseling consultancy and continuing care for Koori people, information, training and community education.</p>	<p>9510 3233</p>	<p><b>YSAS - Youth Substance Abuse Service</b> <a href="http://www.ysas.org.au">www.ysas.org.au</a> Drug and alcohol services within a supportive relationship structure for young people aged 12-21. Outreach teams across metropolitan and regional Victoria.</p>	<p>9418 1020</p>
<b>Other Important Numbers</b>			
<p><b>Newlife Program</b> <a href="http://home.vicnet.net.au/~emradss/newlifeprogram.htm">home.vicnet.net.au/~emradss/newlifeprogram.htm</a> Statewide women only mutual support groups, counselling and referral consultation and community education.</p>	<p>9890 7755</p>	<p><b>Self-help / Family Support</b> Al-Anon and Alateen Family Groups (for families and friends) Gamblers Anon TTY (for the hearing impaired) The Salvation Army</p>	<p>9642 3330 9696 6108 1800 777 706 9653 3250</p>
<p><b>Odyssey House</b> <a href="http://www.odysseyvictoria.org.au">www.odysseyvictoria.org.au</a> Residential therapeutic community program for adults experiencing difficulties with drugs and alcohol.</p>	<p>8341 1600</p>	<p><b>Unstable / Acute Medical Condition</b> Alfred Hospital Monash Medical Centre Western Hospital</p>	<p>9276 2000 9594 6666 8345 6666</p>
<p><b>SEADS – South Eastern Alcohol and Other Drug Services</b> <b>Counseling Services</b> <a href="http://www.southernhealth.org.au/seads/">www.southernhealth.org.au/seads/</a> Assessment and referral, education, counseling and support groups.</p>	<p>8792 2330</p>	<p><b>Acute / Unstable Psych. Condition</b> Junction Clinic Waiora Clinic Dual Diagnosis Resource Centre CAT Team (The Alfred Hospital)</p>	<p>9529 2366 9576 2677 9554 1800 psychiatry triage 1300 363 746</p>

*We acknowledge the original work for this referral pathway as being a collaborative project of ACCESS Drug and Alcohol Service, Central and Outer East Mental Health Services, Eastern Collaboration of Alcohol and Drug Agencies and Whitehorse Division of General Practice.*

**December 2004**